

ARTiPRO *Power Meter*

SERIES 900 “To Save Energy Cost you have to start by measuring it!”

▶ Studies show knowledge of your consumption habits is likely to save you 5–15% on your monthly bill.

▶ Even greater savings are possible if you use this information to see the value of retiring your old refrigerator or changing the washing machine.

▶ For every six households that save 10% on electricity, for instance, we reduce carbon emissions as much as taking one conventional car off the road



Model: 910

We can help you make that informed decision and help you do your part for the environment!

▶ Are your equipment worth the "green ticks" that they said they are? - **measure it!**

▶ Are you operating your refrigerator at optimum temperature without unnecessary over cooling? How much it cost you to set your freezer lower by 1 degree? - **check it out!**

▶ Will you waste more energy due to the frequency of the opening and closing of your refrigerator? If so, your decision for the next fridge should have water dispenser & more compartments? - **make that informed decision!**

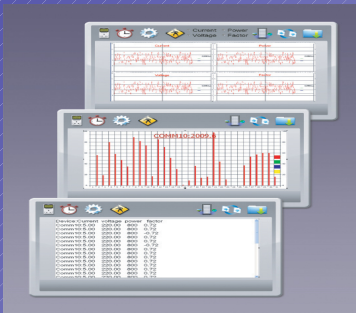


SERIES 900

“Energy savings is possible only if you know where and how it is spent!”

- Voltage rating:

- 90-250V AC 50/60Hz
- Current Measurement: 0-16A
- Power Measurement: 0.1 – 3600W
- Measured Consumption: 0.01 to 9999 Kwh
- Overload Protection



Model: 920

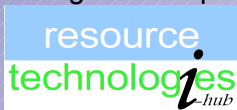
Features:-

- ◆ Measures voltage, current, power, cost and power factor
- ◆ Current day, week and month record
- ◆ Previous day, week and month record
- ◆ Multi level tariff settings
- ◆ 20 built-in programmable on/off timers
- ◆ Audible & visible Limit Alarms for Kwh or Cost consumed; optional Shutdown feature
- ◆ RoHS compliance and additional CO₂ readout feature for environmental awareness
- ◆ Designed to TUV and CE standards
- ◆ Calibrated to traceable International Standards
- ◆ Built-in battery backup for data retention
- ◆ Backlight for better visibility
- ◆ Uniquely sized for compatibility with most single or multi-gang sockets
- ◆ USB connectivity to PC allows Dashboard view, control and setting
- ◆ Real time data logging and charting
- ◆ 6 Variable acquisition rate at for differing needs in data analysis
- ◆ Excel based historical data by day/week/month
- ◆ Trend graphs can be captured and downloaded
- ◆ Software upgradable

Model No.:

[illegible]

Proudly designed and produced by:-



Visit us at www.rti hub.com

